

Design Festival • North Central Shared Facility

A Community Brochure about 3 Design Options for the North Central Shared Facility



What's inside:

About the concept of "Learning Across Community"

- We all learn differently, and we learn all the time
- We learn through doing
- We learn from mentors
- We learn through extended families
- An old proverb states: **Tell me and I forget. Show me and I remember. Let me do and I understand.**

Centres of Excellence & Service Transformation

- Integrated services, learning programs, and sharing space
- The "it takes a village" concept of learning applied to buildings and organizations

Design that is rooted in the Community

- Why 3 Design Options?
 - Strong Indoor–Outdoor Connections
 - Earth Centered, Sustainable Design
 - Active Commons, Student-run businesses
- D1: Adaptive Reuse
- D2: Central Green
- D3: Green Corners

Community Voices Feedback Form

- Tell us what you think about the 3 Design Options?



Fielding Nair International

Architects and change agents for
creative learning communities

Oct 4, 2008 Page 1

What does it mean to learn across community?

We all learn differently, we learn everywhere, and we learn all the time.

- We learn through apprenticeship with mentors
- We learn through projects that connect to our personal passions
- We learn from our extended families
- We learn from daily interactions with community organizations and businesses in our neighborhood

Centres of Excellence are themed learning environments where students “learn across community” by sharing space with community partners as well as learning from and working with those organizations as an intern or apprentice would. Centres of Excellence are the “it takes a village” concept of learning applied to buildings and organizations creating a win-win for students, the community and partnering organizations.



Above right: during the dinner theater in April, 2008, students at Scott Collegiate learned from the national media, Regina Public School teachers, from each other, and from the elder that blessed the evening.



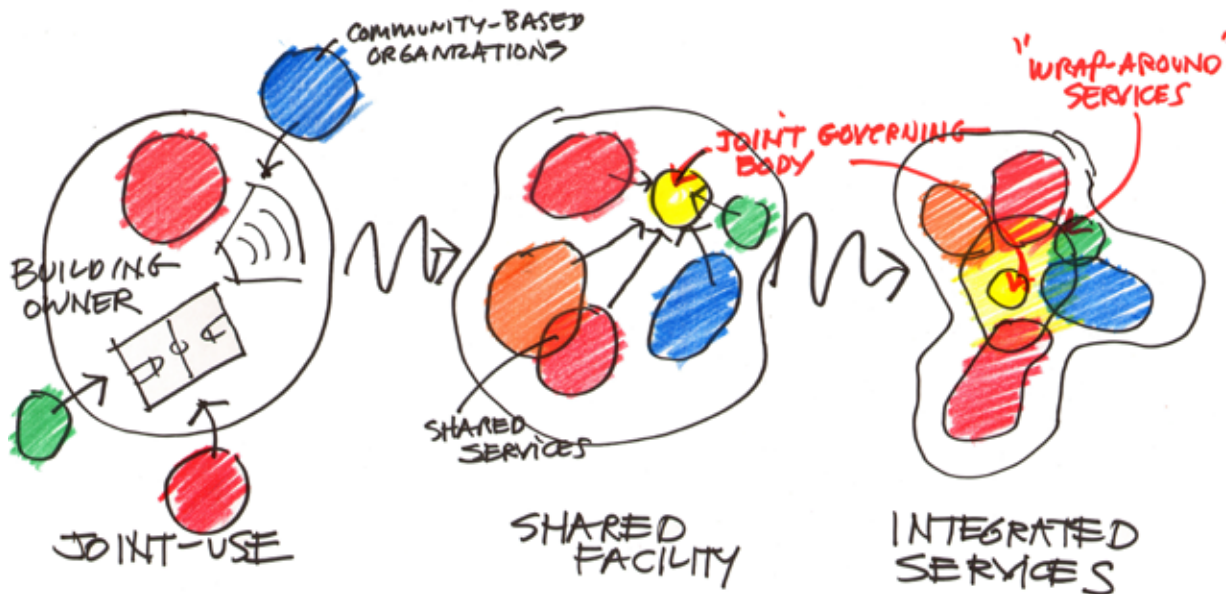
Above: Students at Scott Collegiate developing a “Student Vibe” statement declaring the type of environment they have and aspire to at Scott now and for the North Central Shared Facility

Middle: a fabulous meal at the April dinner theater was prepared by students

Far right: infant dream catcher the Four Directions Primary Health care, where students learn to take care of themselves and their families



How will the NCSF transform community services?



JOINT-USE:

- Do you take turns using the couch in your living room, or sit on it together?
- Joint-use of facilities is like taking turns using the couch.

SHARED FACILITY:

- When you sit on the couch together, do you each do different activities--one watching TV while another reads or talks on the phone?
- Shared use is like sitting on the couch together but doing different things at different times

INTEGRATED SERVICES:

- Do you sit you the couch together and talk and laugh and learn together?
- That's the idea for integrated services.

North Central Shared Facility Partners

- North Central Community Assoc (NCCA)
- Albert Scott Community Centre - City of Regina
- Regina Education and Action on Child Hunger (REACH)
- North Central Service Centre - Regina Police Service
- Four Directions Primary Health Care Centre - Regina Qu'Appelle Health Region
- Scott Collegiate - Regina Public Schools
- Albert Library - Regina Public Library
- Scott Infant and Toddler Centre
- Chili For Children
- Other Community Organizations



Left: Integrated Global Learning Centre in Melbourne, Australia. Students staff the cafe, which is used by members of the community of all ages.

Integrating the old and new



Celebrating
Scott's tradition
as an anchor in
North Central

All 3 Design Options celebrate Scott's tradition as an anchor in North Central by integrating old and new.

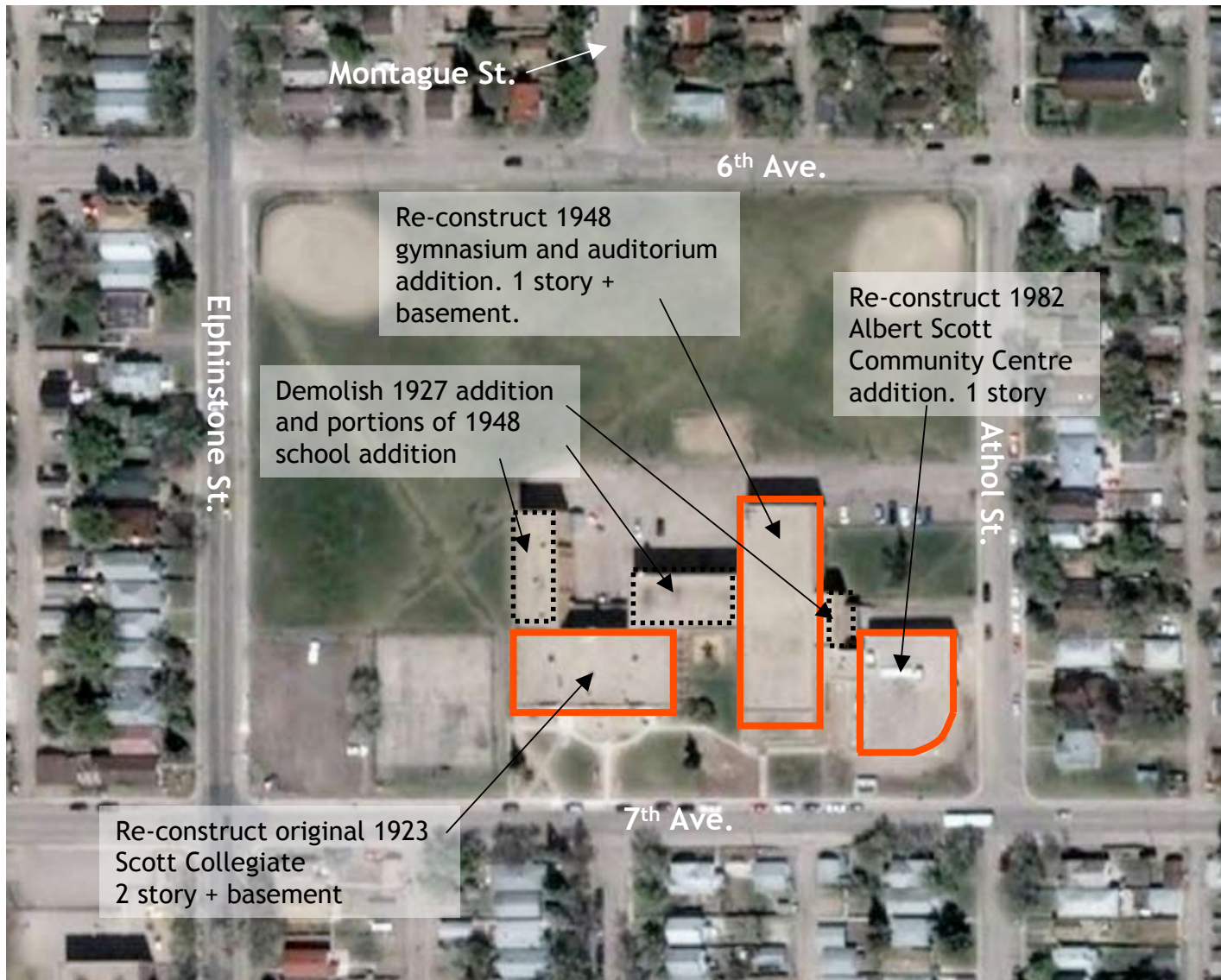
- Design Option 1 (D1) retains the existing structures and preserves the functional, single purpose auditorium.
- Design Option 2 (D2) & Design Option 3 (D3) reuse elements of the facade and brick from Scott Collegiate.



Why 3 Design Options?

"To have a great idea, have a lot of them." Thomas Edison

Design Option 1 • Adaptive Reuse



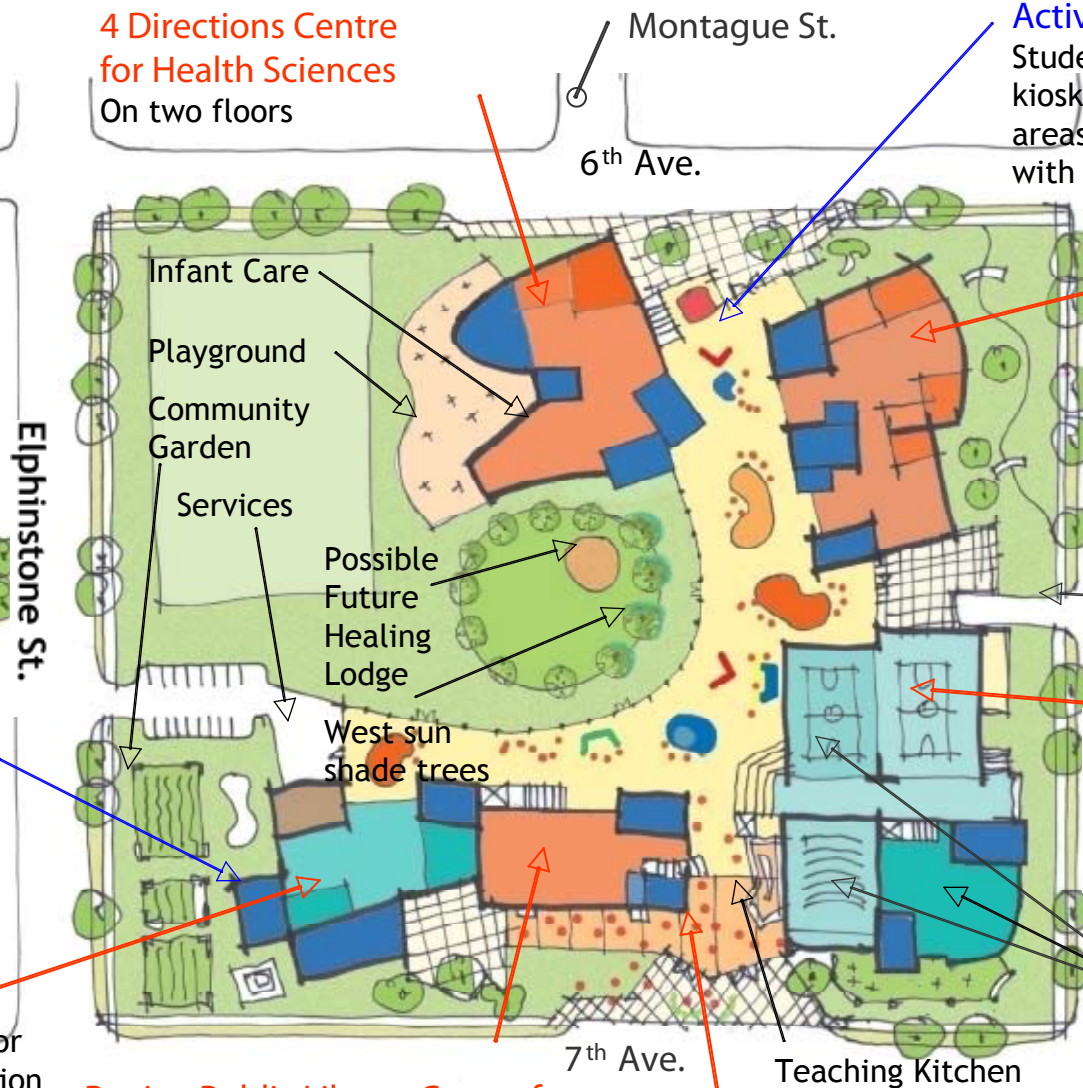
Design Option 1 • Adaptive Reuse

Community Throughout
The City of Regina offers community space in the central commons, auditorium and gymnasiums (programs provided by the Albert Scott Community Center)

Learning Throughout
The blue forms represent meeting rooms and learning studios shared by adults and youth. Scott Collegiate is integrated throughout the professional learning communities.

Centre for Entrepreneurship & Community Development
1st floor includes Regina Education on Child Hunger (REACH). 2nd floor includes Community Based Organizations (CBOs)

4 Directions Centre for Health Sciences
On two floors



Regina Public Library Centre for Information Technology
Includes retrofitted original 1923 Albert Scott building, 2 story + basement

South Entry & North Central Cafe

Active Commons

Student-run incubator carts and kiosks; seating, meeting and eating areas; student and industry gallery with interactive displays.

Centre for Leadership & Justice

1st floor includes Police & Probate, Scott Collegiate Admin. 2nd Floor includes NC Community Assoc

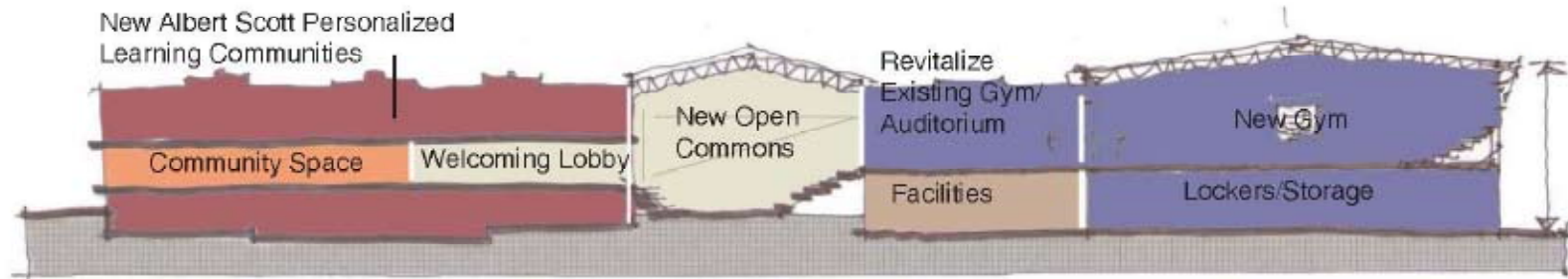
Underground Parking Entry

Scott Centre for Athletics, Fitness & Dance

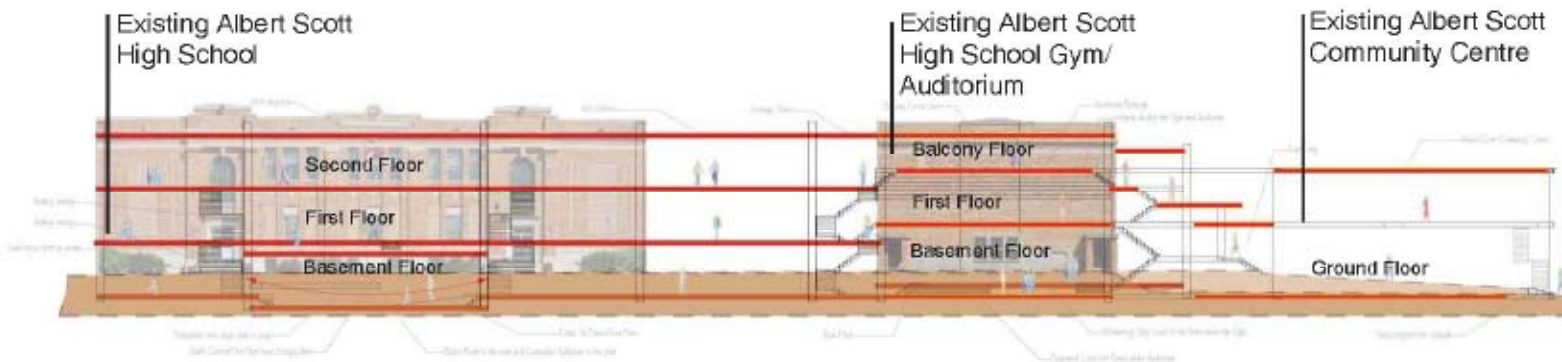
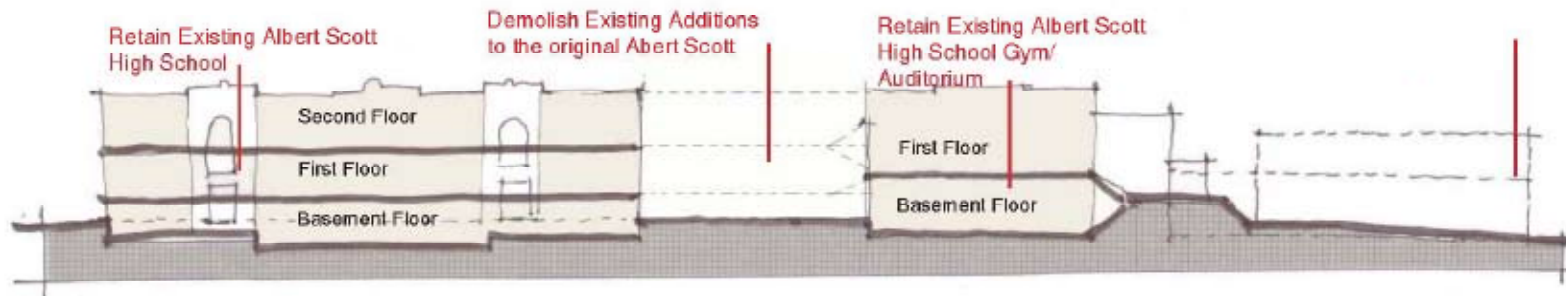
“Where the Round Dance meets Hip-hop.”

Retrofitted 1948 Auditorium & Gym & 1982 Com’y Centre

Design Option 1 • Adaptive Reuse

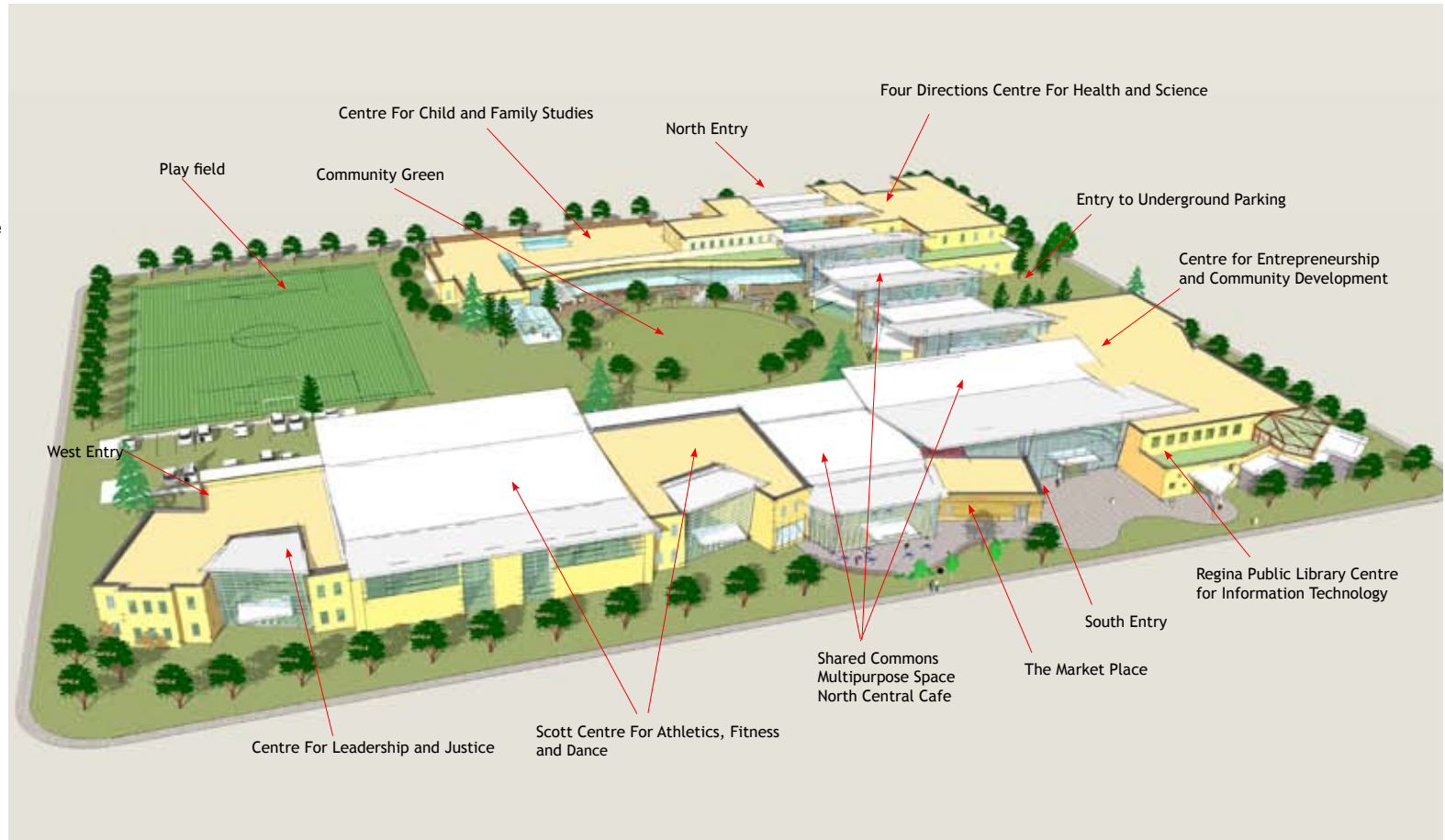


Concept for Retaining Existing Building - Building Sections
North Central Shared Facility Regina, Saskatchewan
8 July 08



Design Option D2, "Central Green" provides outdoor spaces at the centre of the site. These outdoor spaces can be used by the community and the school, and each contribute a new amenity to the neighborhood. From the community green at the centre of the site, to the new playfield at the corner of Sixth Avenue and Ephinstone Street, new hard courts off the fitness centre and the community garden and outdoor cafe terrace on the northside of the North Central Cafe and Shared Commons, these new centre green spaces provide opportunities for community members of all ages to come together.

This option provides a collection of six Centres of Excellence that each are home to both a community service agency and a small sub-community of Scott High School students. An indoor Shared Commons space and passage connects these Centres of Excellence terminating at a main South welcoming entry that contains the North Central Cafe and Multipurpose gathering space for events, performances and round dances that has the potential of becoming a true crossroads for the entire community.



Eyes on the Street for Safety

The Centres of Excellence are organized all around the site, providing access from inside the facility, as well as from the surrounding businesses and residences. Entryways welcome the public and assist newcomers in finding their way around the building.

The programs inside each Centre for Excellence influence outdoor spaces. These spaces also serve to break up the scale of the building. Faculty and staff can view the public entering the campus at all times of the day, without taking extraordinary measures. This also provides a sense of positive adult presence at all times of the day. Parking is located close to the playing field and on all sides of the site to allow for maximum security and visibility.

This diagram illustrates transparent views to the street, which allow for “eyes on the street” from all sides of the campus. Nothing blocks the clear line of sight on campus and all external walls offer transparency. The building’s edges are clearly defined through landscaping elements. Outdoor spaces have been designed to encourage community activity in both warm and cold weather, such as a public plaza space for food vendors, festivals and concerts. Providing year-round seating in these spaces is key.



The North Central Shared Facility is intended to nurture a neighborhood learning network - connecting the community and inspiring growth and revitalization. This diagram represents how the new NCSF would be connected and integrated into the neighboring business, schools, homes, and community resources.

The dotted red lines represents a learning network that extends through the streets of North Central--a realization of the North Central Partner's vision to "Learn Across Community."

Commercial Redevelopment:

Nearby sites are to be identified for redevelopment. For example, a tenant may be sought for the building currently occupied by Four Directions Community Health Centre to the North--one that can contribute to the revitalization of the neighborhood.

Front Porch Network:

Houses along paths to new anchor developments may be encouraged to improve their yards and front rooms--creating spaces with eyes on the street. Improved street lighting and sidewalk landscaping will also contribute.

Street Curriculum:

Selected spots along the learning network can include a focus for student projects, such as a bird feeder or weather station, engaging students in natural observation, data aggregation, and interaction with residents.



Centre for Child and Family Studies

This Centre of Excellence houses both the Scott Infant and Toddler Centre (SITC) and the Family Resource Centre, while also serving as a home base for Scott Collegiate students engaged in the Child Development and Family Studies program. Shared spaces include learning studios and small and medium sized conference rooms, as well as a Commons Area with reception, waiting and breakout spaces forming the heart of the Centre.

Central Green

The Central Green forms the very centre of the site, that contains walking paths, a kitchen garden, playfields and hard courts, sweat lodge facilities and youth sized soccer field.

Sustainable Site Features

Sustainable Site Features include a drought resistant landscape with indigenous species, storm water retention, porous paving systems, cisterns, recycled site water to irrigate the other areas of the landscape, wind power generators, and patio pavers of recycled rubber. In addition, we would encourage the growth of traditional, medicinal plants of First Nations and other prairie plants.

Centre for Leadership and Justice

This Centre of Excellence houses the Regina Police Service and Corrections, Probations and Public Safety while serving as home base for Scott Collegiate students engaged in the Leadership and Justice program. Shared spaces include learning studios and large conference rooms capable of supporting groups of 15-20. A shared Commons Area with reception, waiting and breakout space forms the heart of the Centre.

Scott Centre for Athletics, Fitness and Dance

This Centre of Excellence houses a branded gymnasium capable of becoming two smaller gyms, with a dance studio and weight room, while also serving as a home base for Scott Collegiate students engaged in the Fitness and Health program. Shared spaces include learning studios, small, medium and large sized conference rooms for groups of 15-20, and a shared Commons Area with reception, waiting and breakout space. A partition wall in the gym allows for two usable areas to be created. The outdoor space immediately adjacent is a hard court area which can also be converted into an ice rink during cold weather months



Four Directions Centre for Health and Sciences

This Centre of Excellence houses the Qu'Appelle Health Region's Four Directions Health Centre, while also serving as a home base for Scott Collegiate students engaged in the Health Sciences program. Shared spaces include learning studios and art/science labs, small, medium and large conference rooms capable of supporting groups of 15-20, as well as a shared Commons Area with reception, waiting and breakout space at the heart of the Centre.

Scott Collegiate High School

The school is integrated throughout the North Central Shared Facility. Dedicated spaces, such as learning studios, seminar rooms, breakout learning areas, project yards, and cubbie neighborhoods, are highlighted in blue. These areas will serve a student population of between 450-500. Community Education is a philosophy based on community involvement and lifelong learning, including project-based learning initiatives, mentorships, career exposure with other organizations, and service learning opportunities.

North Central Shared Commons

The North Central Shared Facility integrates over a dozen variously sized community-based service organizations which share a main commons, including a large open, flexible multi-purpose space capable of seating 300- 400, the North Central Cafe with outdoor seating, The Marketplace, and a dedicated space for gatherings of First Nations elders.

Centre for Entrepreneurship and Community Development

This Centre of Excellence houses the Albert Scott Community Centre, North Central Community Association and other community based organizations, while also serving as a home base for Scott Collegiate students engaged in the Entrepreneurship and Community Development program. Shared spaces include learning studios and small, medium and large sized conference rooms capable of supporting groups of 15-20. A shared Commons Area with reception, waiting and breakout space forms the heart of the Centre.

Regina Public Library Centre for Information Technology

This Centre of Excellence houses Albert Library, part of the Regina Public Library system, while also serving as a home base for Scott Collegiate students engaged in the Arts and Humanities program. Shared spaces include learning studios, art labs and small, medium and large sized conference rooms for groups as large as 15-20. A shared Commons Area with reception, waiting and breakout space is situated at the heart of the Centre.



Scott Collegiate integrated throughout.
Spaces in this blue are specifically
Scott Collegiate spaces.



View of South Along 7th Avenue

North Central Shared Facility

Design Option 2 | Central Green | 4 October 2008

For more information or
to provide feedback please visit:
www.northcentralsharedfacility.ca



Main Indoor Commons From Balcony

North Central Shared Facility
Design Option 2 | Central Green | 4 October 2008

For more information or
to provide feedback please visit:
www.northcentralsharedfacility.ca



Reconnecting Montague Street

Option D3, “Green Corners” was designed to respond to the pattern of streets and buildings in this section of Regina by reintroducing the space of Montague Street through site. The site is located on an usual “superblock” in the pattern of blocks and streets in the area that terminates Montague Street at Sixth and Seventh Avenues. This option reconnects both streets to a new enclosed form of Montague Street, called the Montague Mews.

Montague Mews

The Montague Mews borrows from the tradition of the passage, an covered interior street that often connects two streets. This strategy extends the public realm of the street on the outside to the inside, creating a lively temperate space year round. The Montague Mews incorporates many of the architectural principles of the passage tradition, such as a skylights at the roof, active uses, and eyes on the street on both sides, and a grand scale.

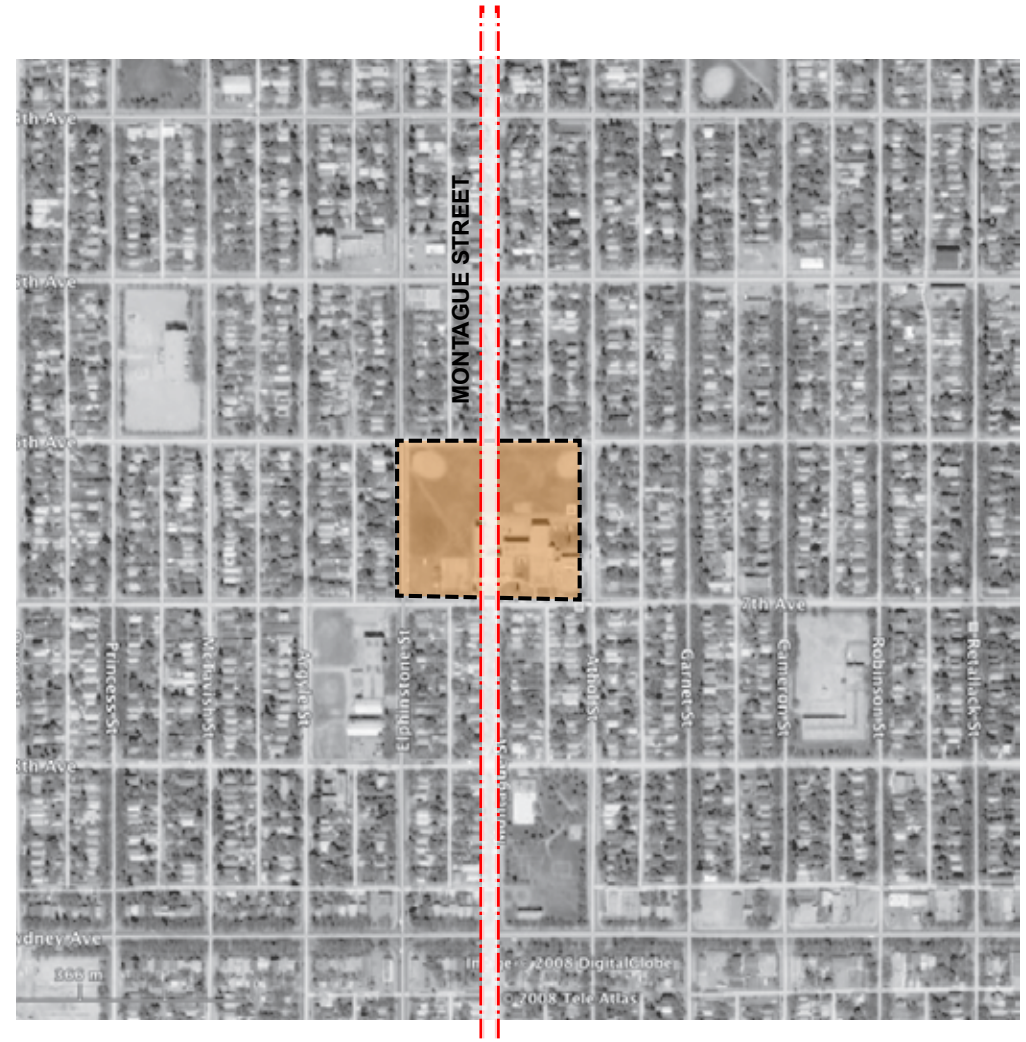
Passage Examples



Milan Galleria, Milan, Italy



Potsdamer Platz, Berlin, Germany



Scott Centre for Athletics, Fitness, & Dances

This Centre of Excellence focuses on the importance of developing and maintaining a healthy mind and body. The centre contains a large gymnasium with branded basketball court and spectator seating, an auxiliary gymnasium that can double as a dance studio, and large multipurpose room, and a training room with views to the street. The North Central Fitness Centre also houses the Scott Collegiate Administration office suite.

Four Directions Center for Health Sciences

This Centre of Excellence houses the Qu'Appelle Health Region's Four Directions Health Centre, while also serving as a home base for Scott collegiate students engaged in the Health Sciences program. Shared spaces include learning studios and art/science labs, small, medium, and large conference rooms capable of supporting groups of 15-20, as well as a shared Commons Area with reception, waiting and breakout space at the heart of the Centre.

Centre for Leadership and Justice

This Centre of Excellence houses the Regina Police Service and Correction, Probations and Public Safety while serving as home base for Scott Collegiate students engaged in the Leadership and Justice program. The Centre is located among other community resources on Seventh Avenue, providing a "storefront" presence for the Regina Police Service, and "eyes on the street."

Centre for Child and Family Studies

The Centre houses both the Scott Infant and Toddler Center (SITC) and the Family Resource Center, while also serving as a home base for Scott Collegiate students engaged in the Child Development and Family Studies program. Shared spaces include learning studios and small and medium sized conference rooms as well as a Commons Area with reception, waiting and breakout spaces forming the heart of the Centre.

Scott Collegiate Integrated Throughout

The school is integrated throughout the North Central Shared Facility. Dedicated spaces, such as learning studios, seminar rooms, breakout learning areas, project yards, and cubbie neighborhoods, are highlighted in blue. These areas will serve a student population of between 450-500. Community Education is a philosophy based on community involvement and lifelong learning, including project-based learning initiatives, mentorships, career exposure with other organizations, and service learning opportunities.

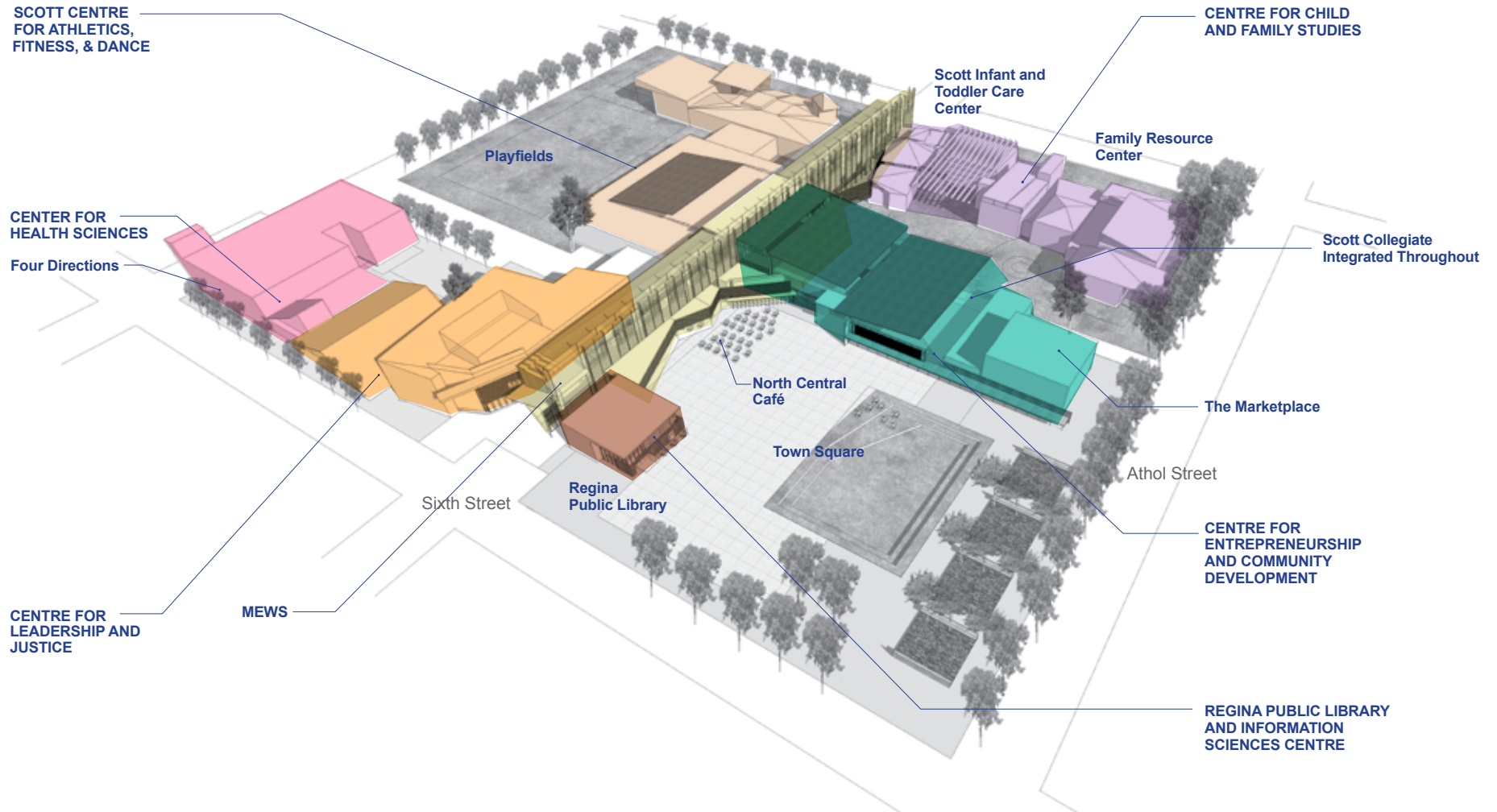
Centre for Entrepreneurship and Community Development

This Centre of Excellence houses the Albert Scott Community Centre and a variety of programs for recreation and community services. The Centre is located adjacent to both the Town Square and community gardens to facilitate events both indoor and out of doors. The Centre also serves as a home base for Scott Collegiate students engaged in the Entrepreneurship and Community Development program.

Regina Public Library Centre for Information Technology

This Centre of Excellence houses the Albert Library, part of the Regina Public Library system, while also serving as a home base for Scott Collegiate students engaged in the Information Sciences Centre.





To support large First Nations events such as round dances and sweats, major community spaces have been organized in a sequence that can begin or in outdoors and move through indoor spaces.

The gymnasium and mews performance space can be combined into one large space through the operation of several glass roll up doors between the two spaces. These spaces are connected to the playfields as well.

Green space on the east is provided as a possible sweat lodge location. The space is protected, though visible, and connects to the Albert Scott Community Centre.



View of Town Square from Athol Street

North Central Shared Facility
Design Option 3 | Green Corners

4 October 2008

For more information or
to provide feedback please visit:
www.northcentralsharedfacility.ca



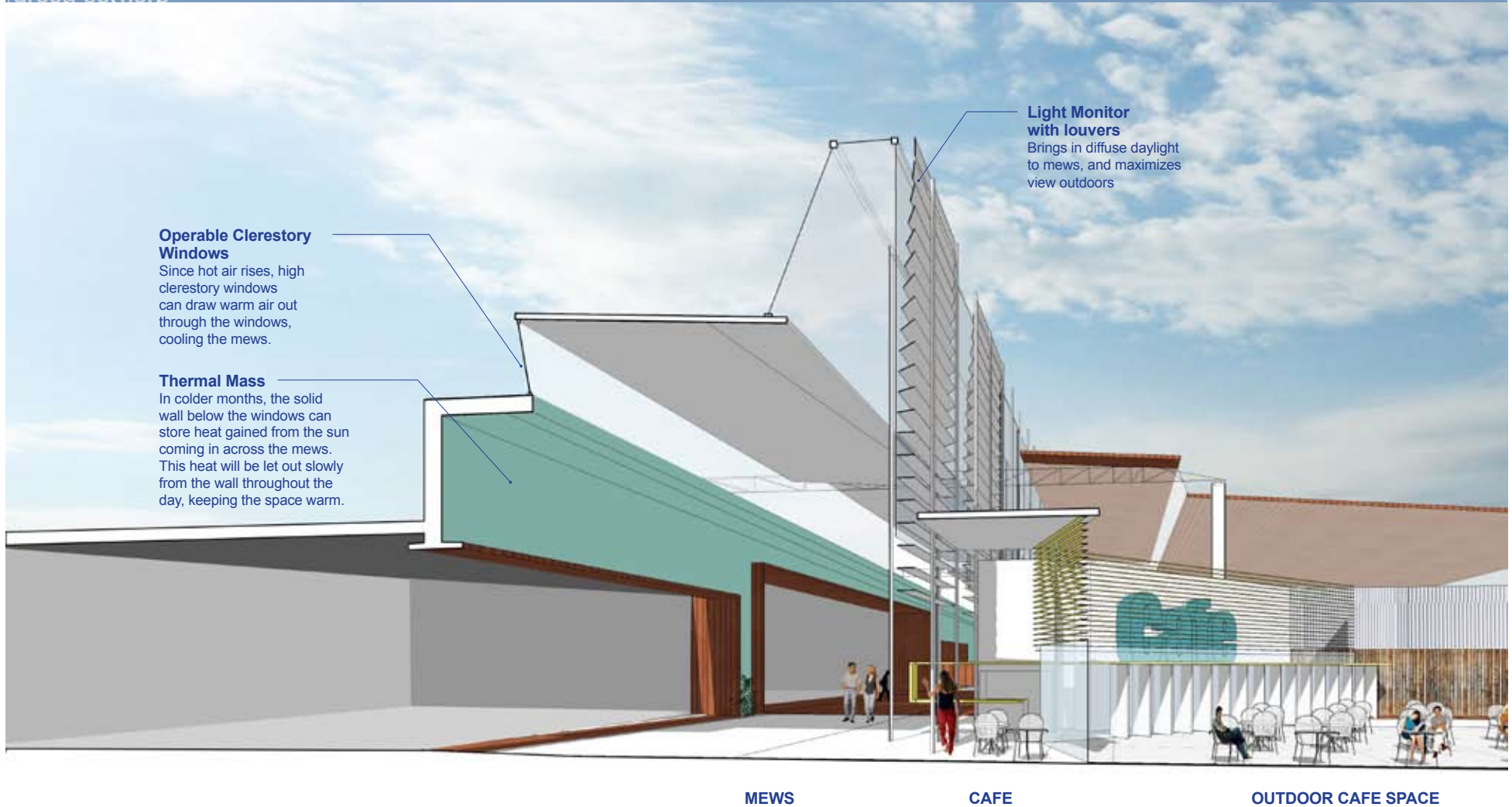
View of Montague Mews

North Central Shared Facility
Design Option 3 | Green Corners

4 October 2008

For more information or
to provide feedback please visit:
www.northcentralsharedfacility.ca





Design Festival • Feedback Form • Design Options

What are your Hopes? Fears? Suggestions? for each Design Option.

Design Option 1 - Adaptive Reuse

Design Option 2 - Community Green

Design Option 3 - Green Corners

Contact information:

Name _____

Phone _____

Address _____

Email _____

Return forms by mail to:

Project Coordinator
c/o Educational Facilities
Regina Public School Board Office
1600 – 4th Ave
Regina, SK S4R 3C8

Why did you attend the Design Festival?

Yes or No?

Did you attend the Design Options Presentation?

Did you attend the Feast?

Rounddance?

Community Cleanup?

Free-cycle?

Anything else you want to share?
